



IVORY HOMES

GABLER'S GROVE TOWNS



JULY 2025



THIS IS IVORY

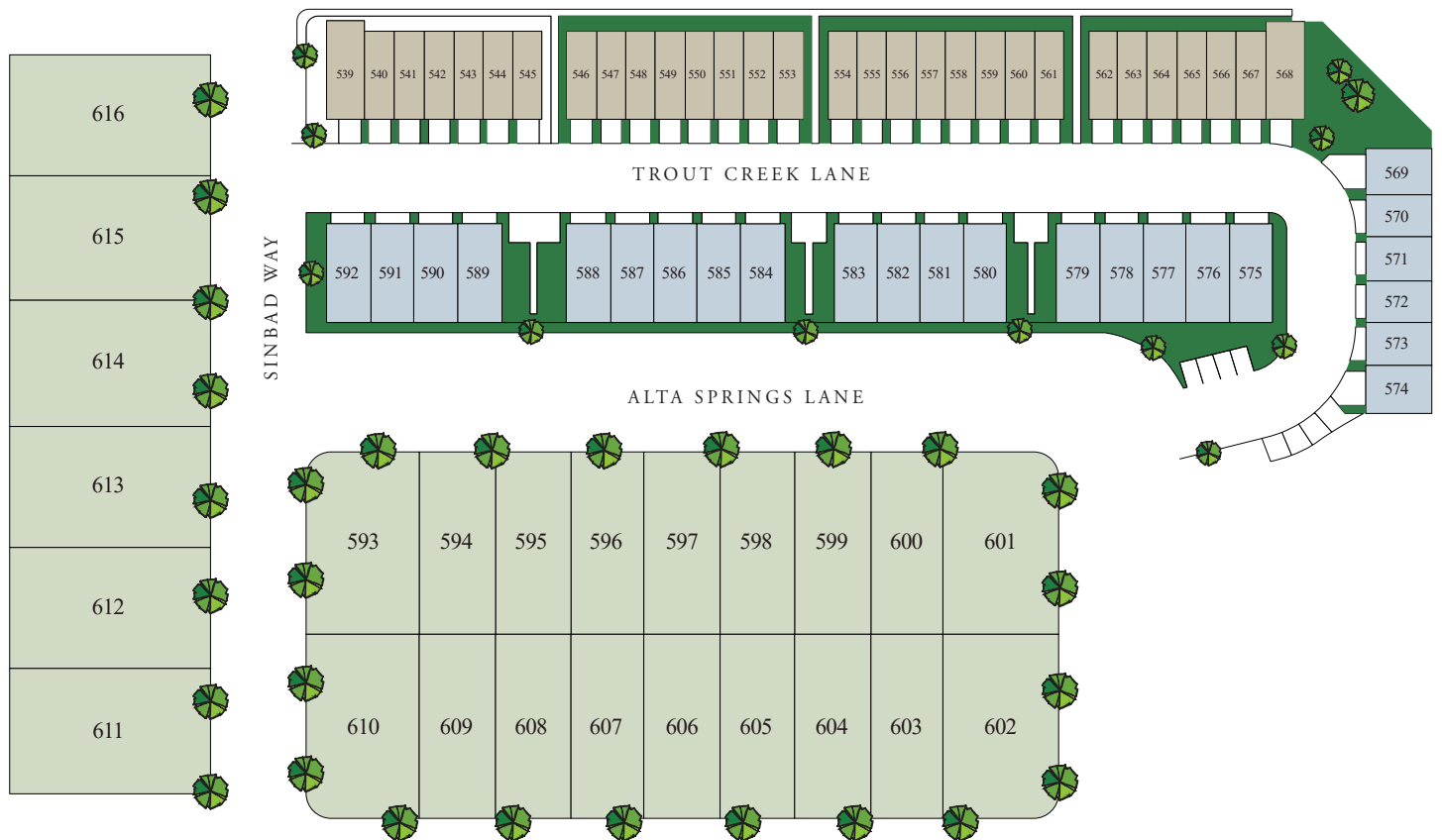
GABLER'S GROVE

A beautiful community nestled within the heart of Magna.



GABLER'S GROVE

PHASES 1-6

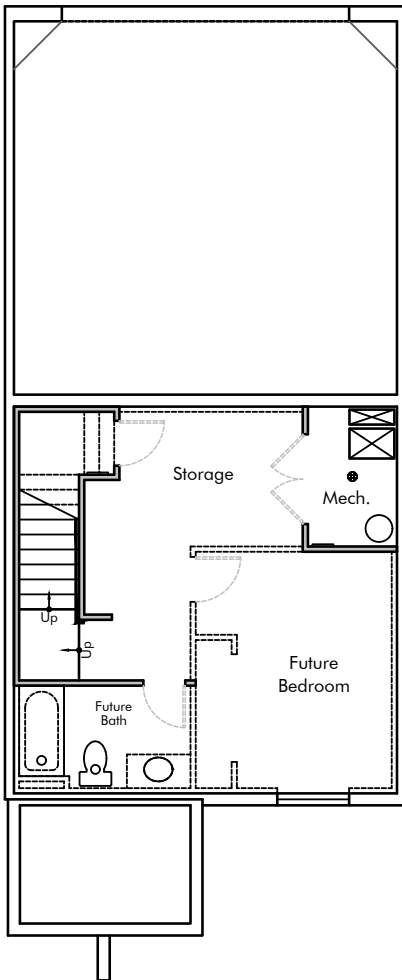




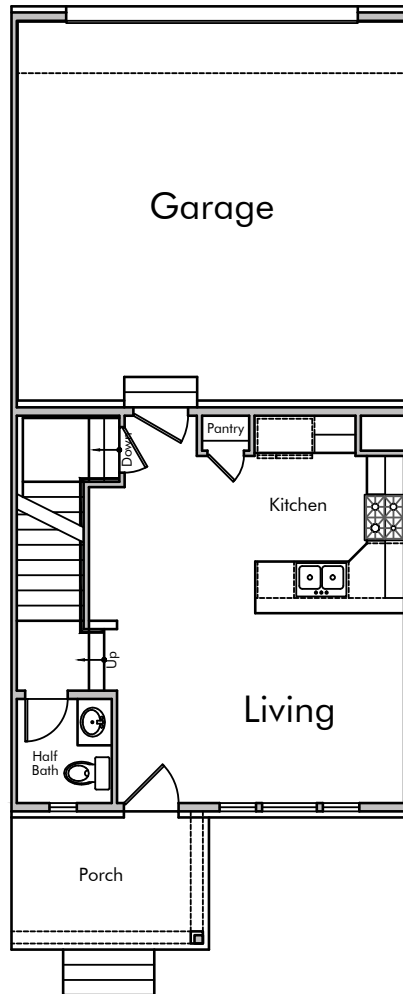
IVORYTOWNS

Stylish, smart, and surprisingly affordable—Ivory Townhomes at Gabler's Grove are thoughtfully designed for the way Utahns live today. Whether you're a first-time homebuyer, a growing family, or someone looking to simplify without sacrificing comfort, these townhomes deliver modern layouts, energy efficiency, and access to vibrant communities across the state.

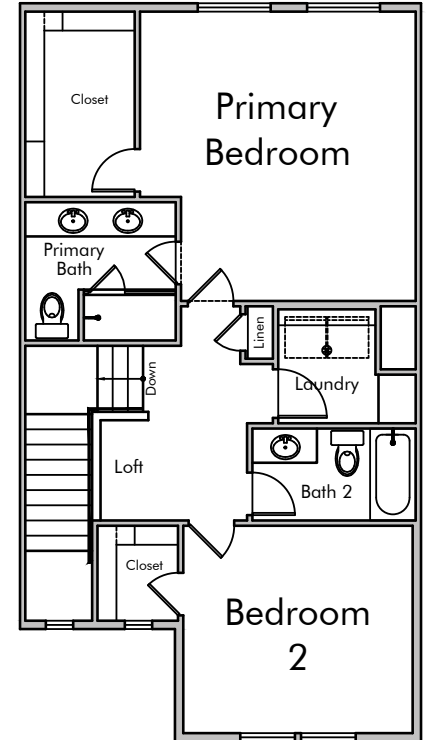
	PLAN NAME	TOTAL FINISHED SQUARE FOOTAGE	TOTAL UNFINISHED SQUARE FOOTAGE	TOTAL SQUARE FOOTAGE	BEDROOMS (FINISHED)	BATHROOMS (FINISHED)
PACIFIC	BELLEVUE	1,111	447	1,558	2-3	1.5-2.5
	OLYMPIA	1,395	500	1,895	3-4	2.5-3.5
ROW	CHARLES	1,050	317	1,367	1-2	1-2
	RIDGEWOOD	1,073	314	1,387	1-2	1-2



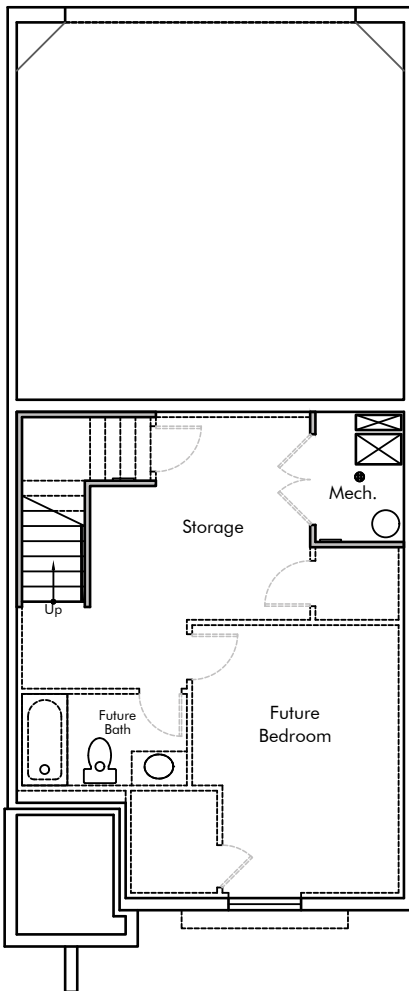
Lower Level



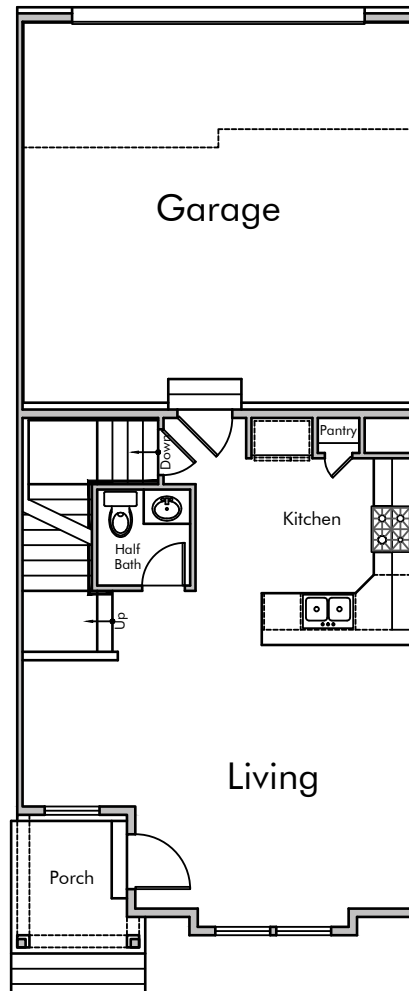
Main Level



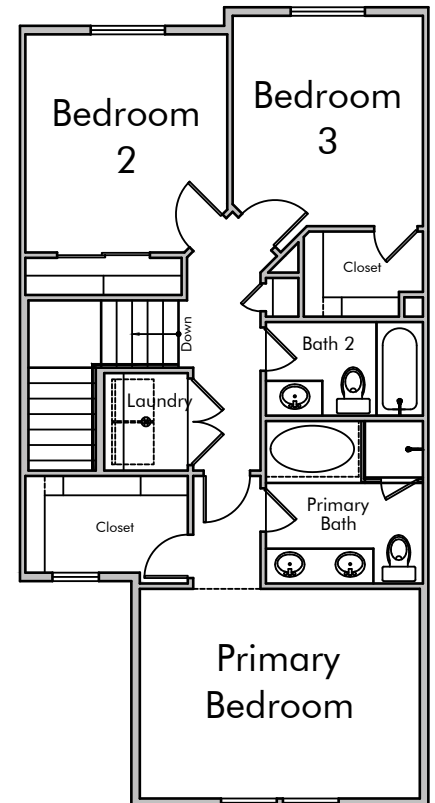
Upper Level



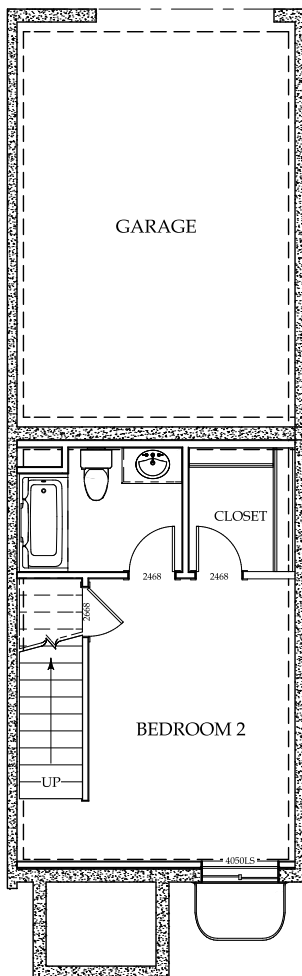
Lower Level



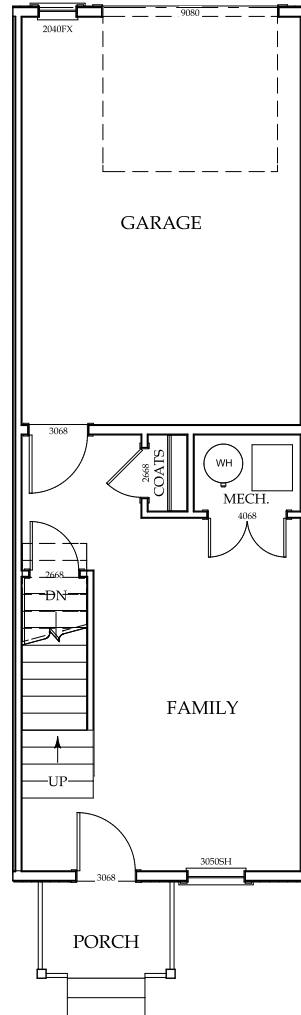
Main Level



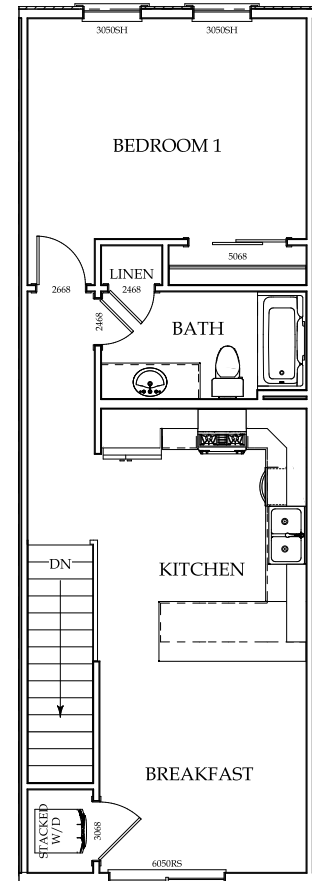
Upper Level



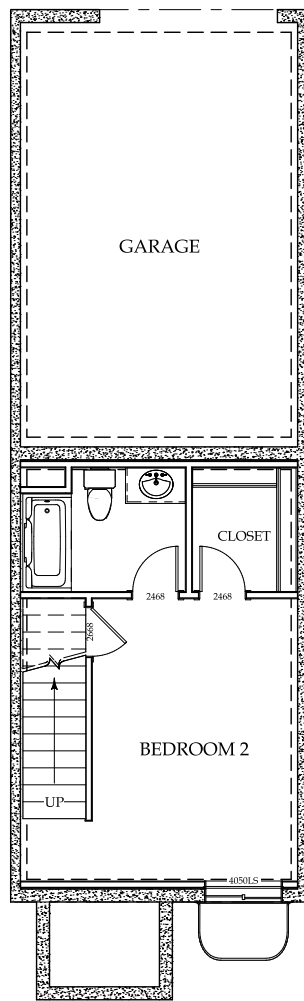
Lower Level



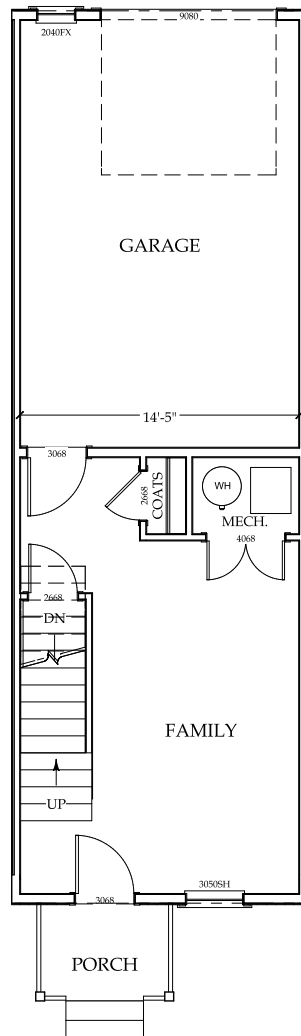
Main Level



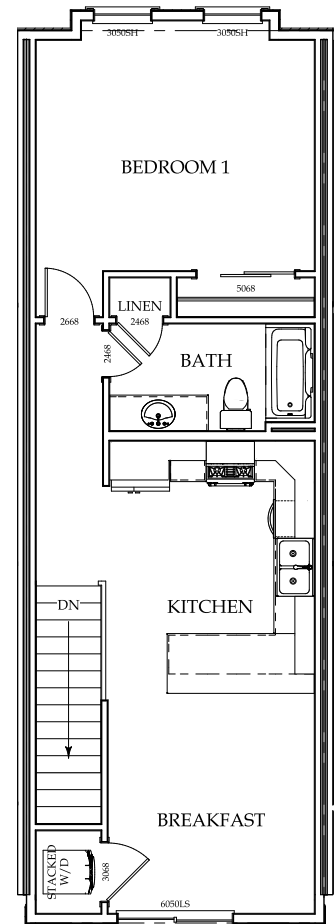
Upper Level



Lower Level



Main Level



Upper Level



FOLLOW US ON SOCIAL
@ivoryhomes

www.ivoryhomes.com